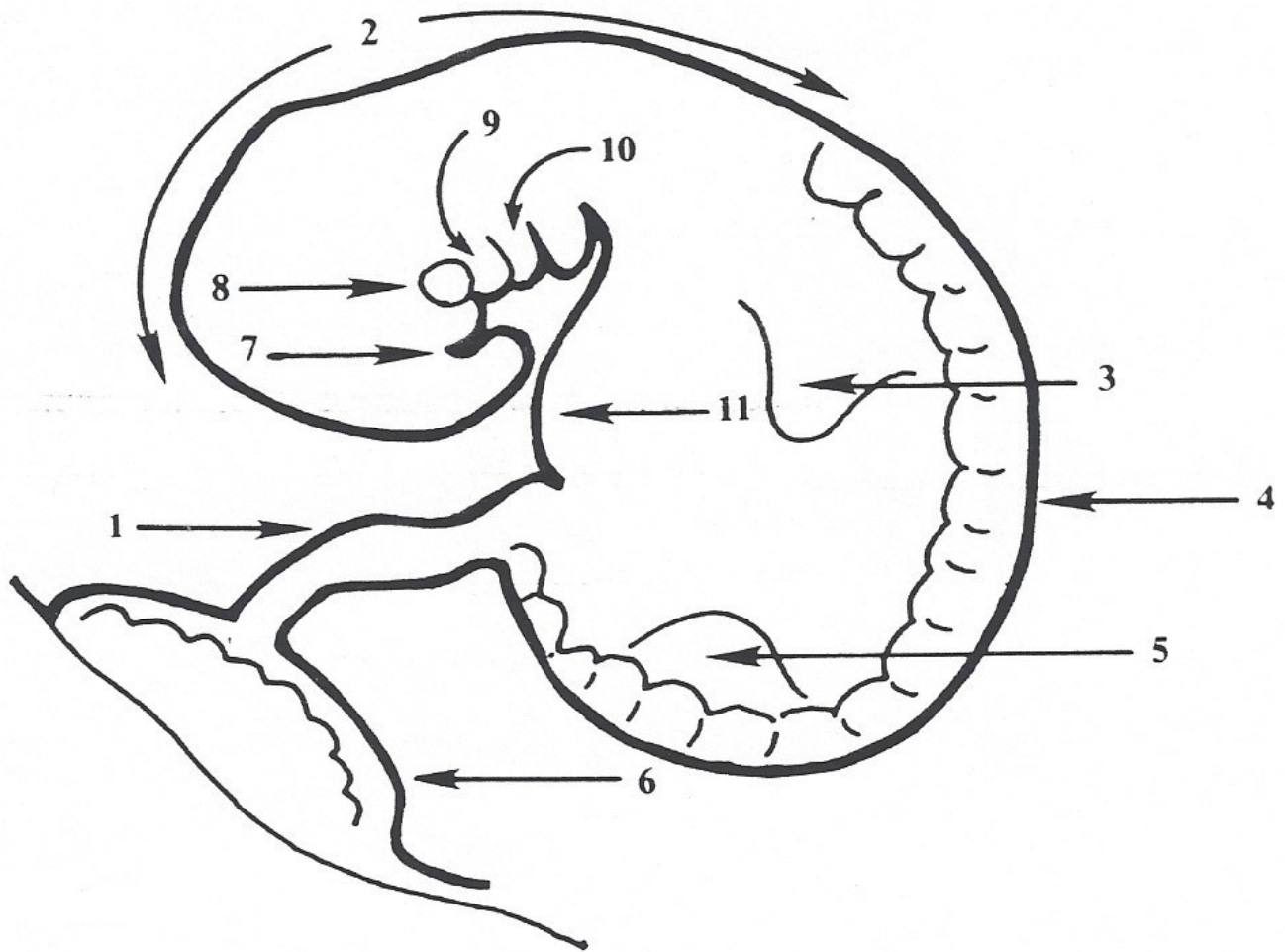


The Embryo

Name _____

During the first two weeks of pregnancy, the fertilized egg divided into a mass of cells and attaches itself to the uterine wall and is referred to as the Period of the Embryo. Identify the parts of the embryo by writing the parts of the body on the arrows provided.

Placenta, eye, nasal pit, future head, arm bud, heart, leg bud, developing spinal column, umbilical cord, lungs, jaw.



The Embryo

key

Name _____

During the first two weeks of pregnancy, the fertilized egg divided into a mass of cells and attaches itself to the uterine wall and is referred to as the Period of the Embryo. Identify the parts of the embryo by writing the parts of the body on the lines provided.

Placenta, eye, nasal pit, future head, arm bud, heart, leg bud, developing spinal column, umbilical cord, lungs, jaw.

